

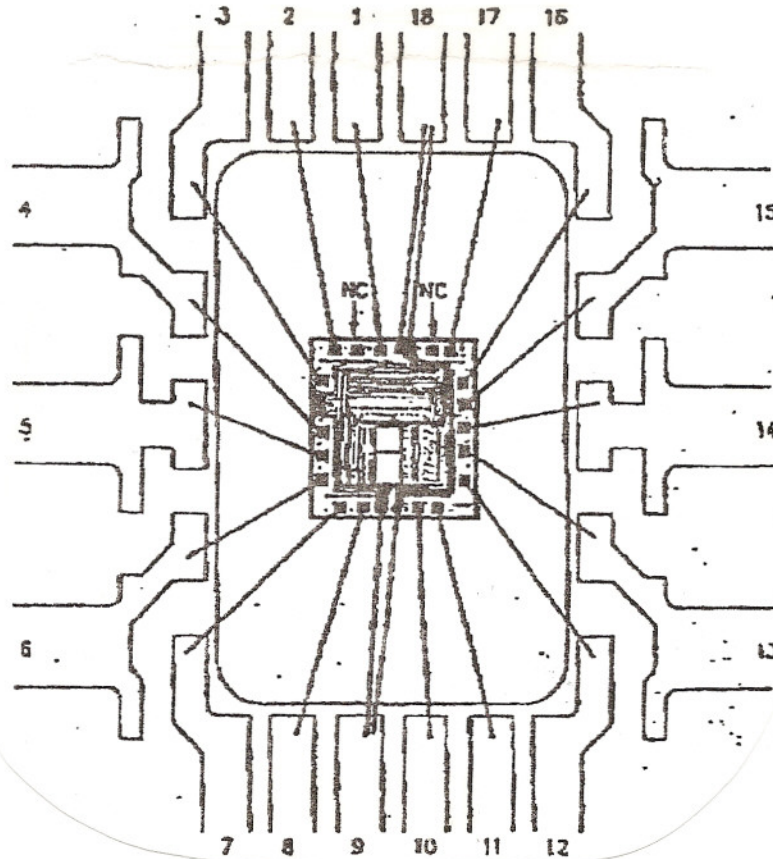


# Sierra Components, Inc.

2222 Park Place Building 3 Suite E • Minden, Nevada 89423

Phone: 775.783.4940 Fax: 775.783.4947

Chip back potential is the level which bulk silicon is maintained by on-chip connection, or it is the level to which the chip back must be connected when specifically stated below. If no potential is given the chip back should be isolated.



**Topside Metal: Al**

**Backside: Si**

**Backside Potential:**

**Mask Ref:**

**Bond Pads : .004"**

**APPROVED BY: CB**

**MFG: IDT**

**DIE SIZE : .092" x .080"**

**THICKNESS: .020"**

**DATE: 2/7/01**

**P/N: IDT72402**